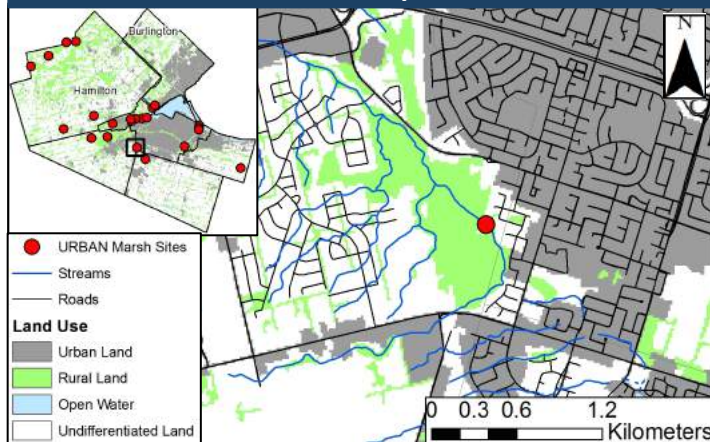


Site Information

MMP Route	ON879
Land Management	Hamilton Conservation Authority (HCA)
URBAN Monitoring	Sampled in 2010, 2013
Urban Land use	55% urban land in 5000 m radius around site
Road Density	70 m/ha in 5000 m radius around site
Ecological Importance	Marsh in an urbanizing area, right next to a new residential subdivision

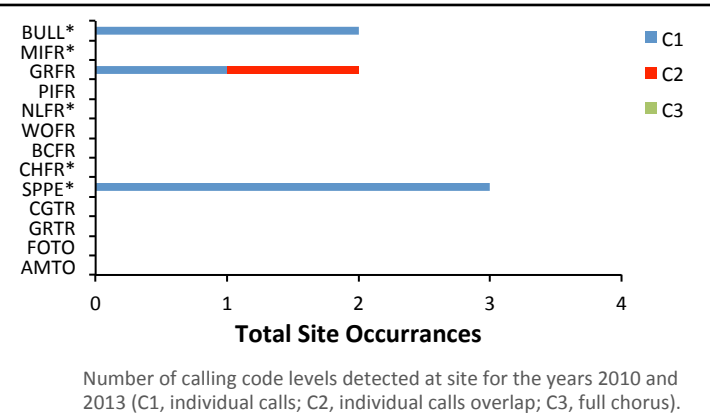
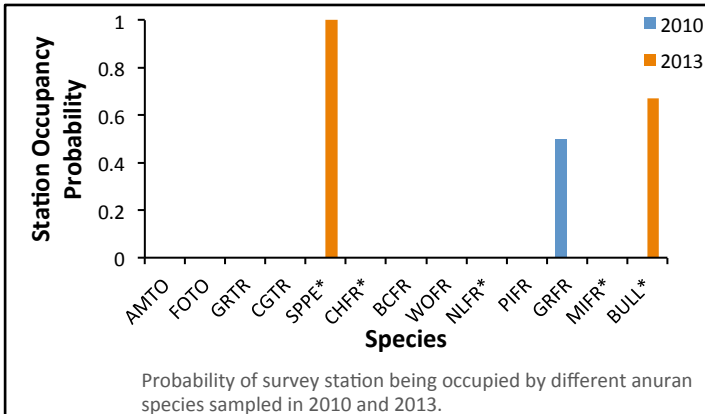
Site Map



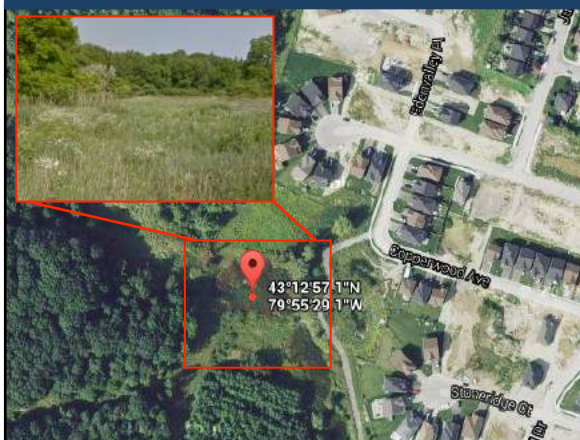
Results

Amphibians

Indicator	Score	
	2010	2013
Total Species Richness	1	2
Indicator Species at Site	None	Spring peeper, bull frog



Site Summary



- Low species richness in 2010 and 2013; both species types detected in 2013 were indicator species which suggests improved quality of marsh habitat at this site.
- C1 calling codes detected indicating low abundance of bull frogs and spring peepers; C2 calling codes detected shows a healthy green frog population at this location.
- The bull frog is a declining species in Ontario. Their presence in low numbers here indicates a moderately healthy wetland that must be protected to prevent further population declines.

Overall Status 2013:

Moderately healthy amphibian community