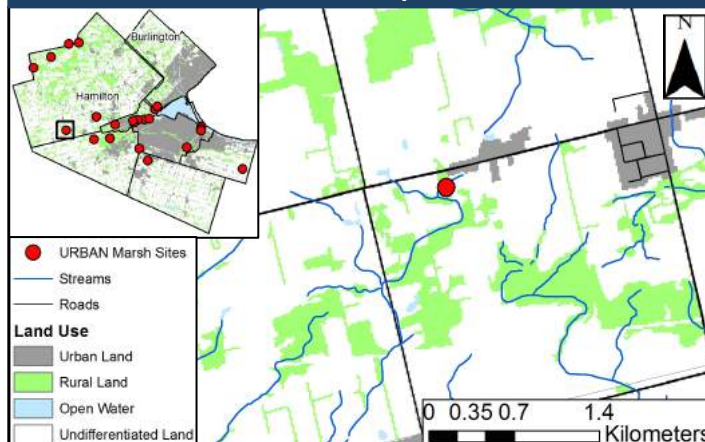


## Site Information

<b>MMP Route</b>	ON905
<b>Land Management</b>	Grand River Conservation Authority (GRCA)
<b>URBAN Monitoring</b>	Sampled in 2011, 2012, 2013
<b>Urban Land use</b>	<b>5.8%</b> urban land in 5000 m radius around site
<b>Road Density</b>	<b>3.3 m/ha</b> in 5000 m radius around site
<b>Ecological Importance</b>	Remnant marsh in an agriculturally-dominated landscape

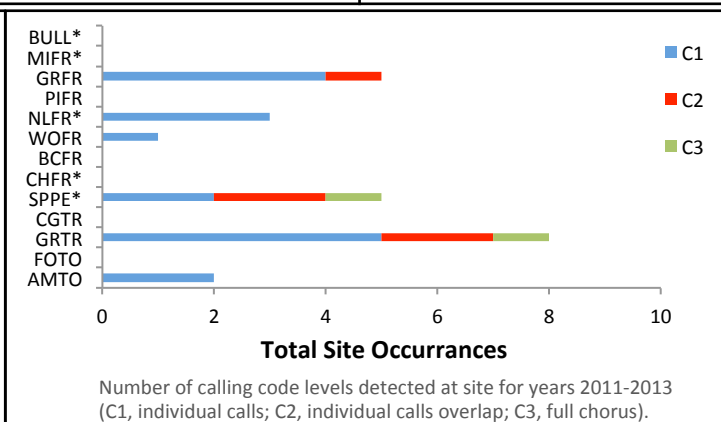
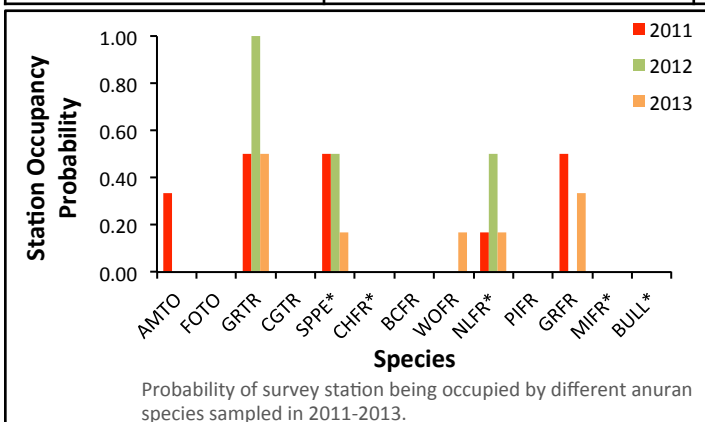
## Site Map



## Results

### Amphibians

Indicator	Score		
	2011	2012	2013
<b>Total Species Richness</b>	5	3	5
<b>Indicator Species at Site</b>	Spring peeper, northern leopard frog	Spring peeper, northern leopard frog	Spring peeper, northern leopard frog



## Site Summary



- Good species richness observed between 2011 and 2013.
- The spring peeper and leopard frog (both indicator species found in the Hamilton region) were identified at this marsh all three years sampled. This indicates high quality marsh habitat.
- C3 calling codes detected and a high station occupancy probability indicates a high abundance of spring peepers and gray tree frogs at this location.
- The leopard frog is a declining species in Ontario. Their presence indicates a healthy wetland that must be protected to prevent further population declines.

Overall Status 2013:

**Healthy amphibian community**