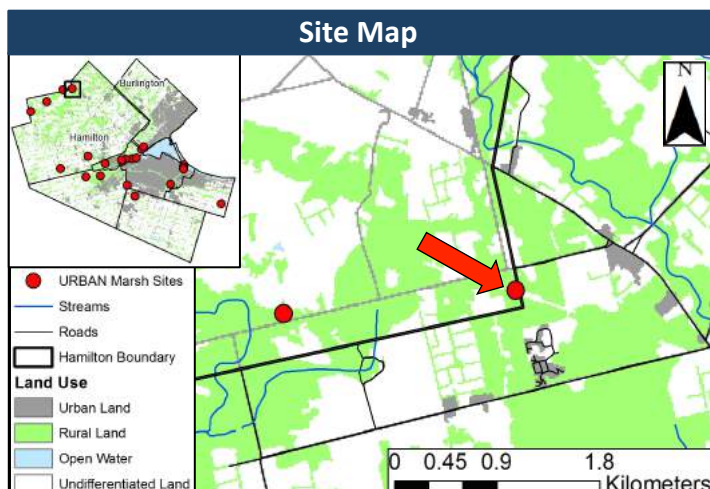


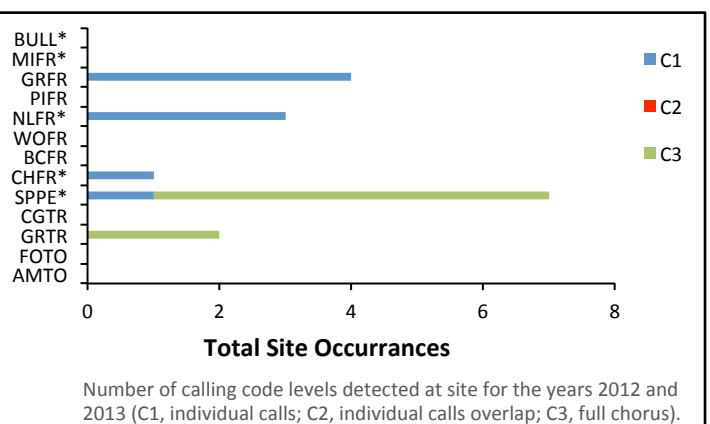
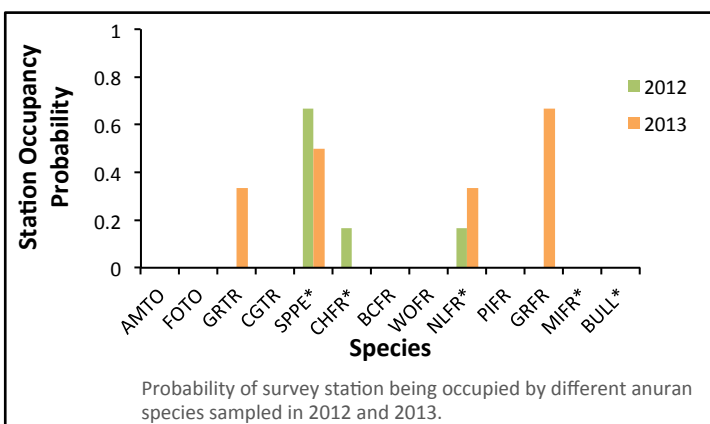
Site Information	
<b>MMP Route</b>	ON937
<b>Land Management</b>	Hamilton Conservation Authority (HCA)
<b>URBAN Monitoring</b>	Sampled in 2012, 2013
<b>Urban Land use</b>	6% urban land in 5000 m radius around site
<b>Road Density</b>	7 m/ha in 5000 m radius around site
<b>Ecological Importance</b>	Wetland in an urbanizing area. Creek flows outside of the wetland to the Niagara River Area of Concern



## Results

### Amphibians

Indicator	Score	
	2012	2013
<b>Total Species Richness</b>	3	4
<b>Indicator Species at Site</b>	Spring peeper, northern leopard frog, chorus frog	Spring peeper, northern leopard frog



## Site Summary



- Species richness has increased since last monitored in 2012.
- All three of the species detected in 2012, and two of the species detected in 2013 were indicator species. This suggests a healthy marsh habitat.
- C3 calling codes detected indicates a high abundance of spring peepers and gray tree frogs.
- Northern leopard frog abundance increased in 2013.
- The northern leopard frog is a declining species in Ontario. Their presence indicates a healthy wetland that must be protected to prevent further population declines.

Overall Status 2013:

**Healthy amphibian community**