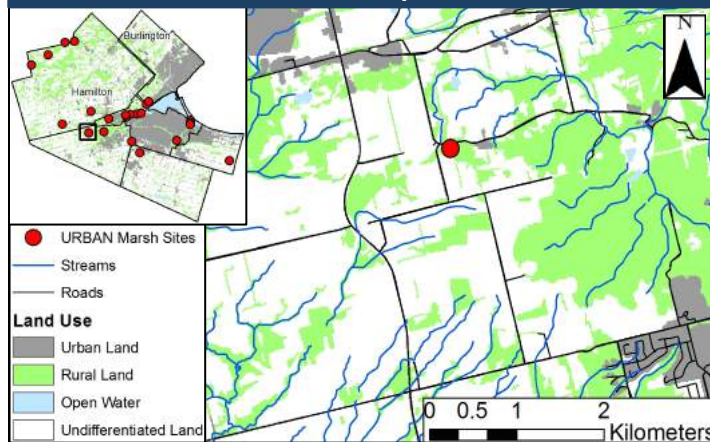


Site Information

MMP Route	ON918
Land Management	Hamilton Conservation Authority (HCA)
URBAN Monitoring	Sampled in 2011, 2012, 2013
Urban Land use	14% urban land in 5000 m radius around site
Road Density	15 m/ha in 5000 m radius around site
Ecological Importance	Provincially Significant Wetland

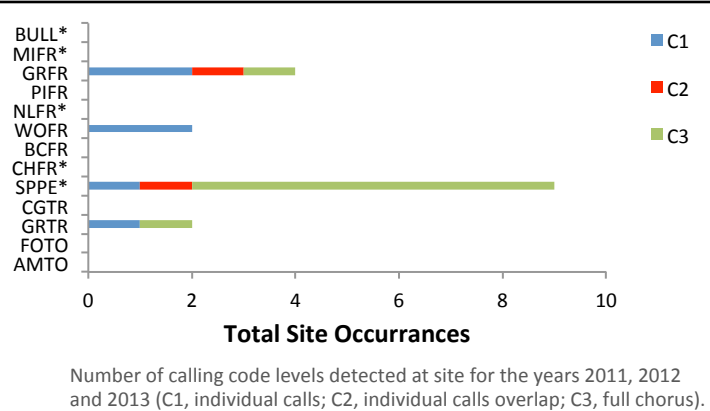
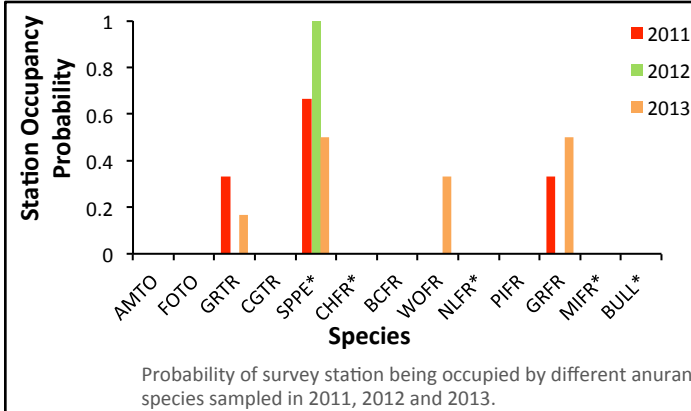
Site Map



Results

Amphibians

Indicator	Score		
	2011	2012	2013
Total Species Richness	3	1	4
Indicator Species at Site	Spring peeper	Spring peeper	Spring peeper



Site Summary

- Species richness has improved since first sampled in 2011.
- Spring peepers, an indicator species, have been detected at this site every year. This indicates high quality marsh habitat.
- C3 calling codes detected indicates a high abundance of spring peeper, gray tree frogs, and green frogs at this location.



Overall Status 2013:

Healthy amphibian community