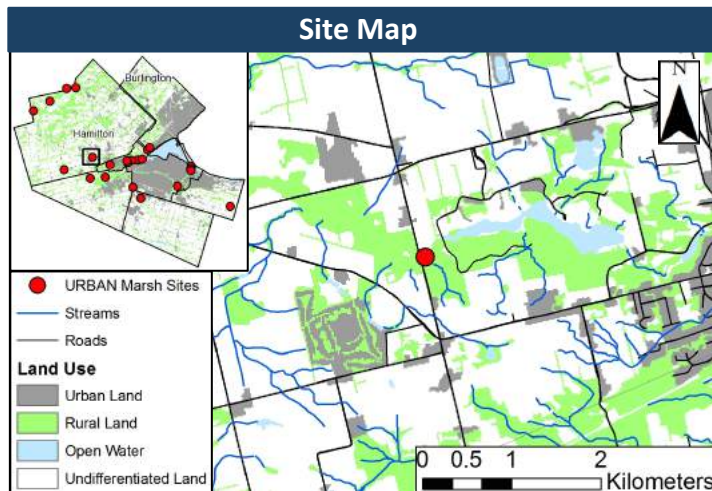


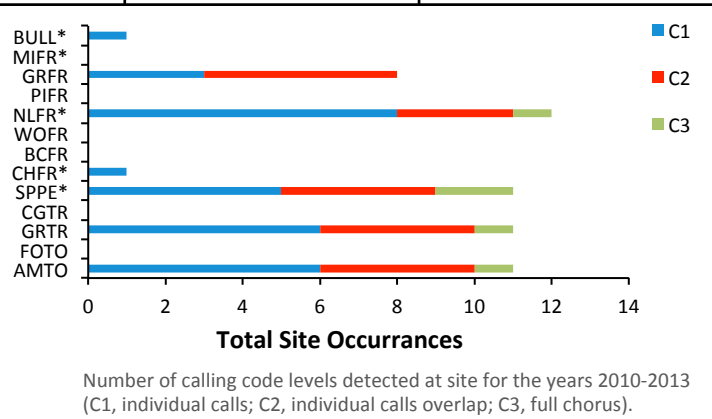
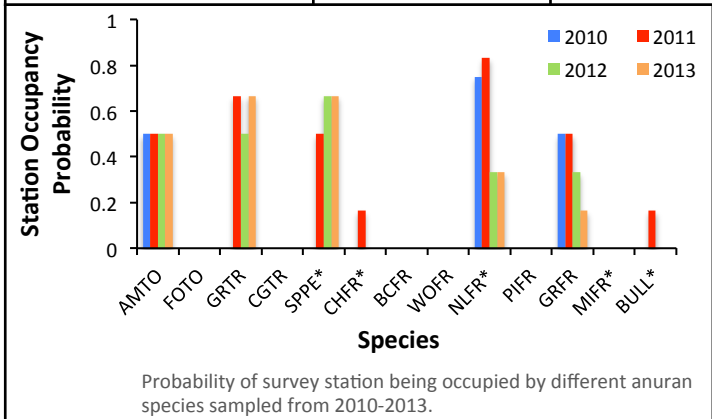
Site Information	
MMP Route	ON868
Land Management	Hamilton Conservation Authority (HCA)
URBAN Monitoring	Sampled in 2010, 2011, 2012, 2013
Urban Land use	15% urban land in 5000 m radius around site
Road Density	9.6 m/ha in 5000 m radius around site
Ecological Importance	Area of natural and scientific interest; not yet classified as provincially significant.



Results

Amphibians

Indicator	Score			
	2010	2011	2012	2013
Total Species Richness	3	7	5	5
Indicator Species at Site	Northern leopard frog	Spring peeper, chorus frog, northern leopard frog, bull frog	Spring peeper, northern leopard frog	Spring peeper, northern leopard frog



Site Summary

- Very high species richness including all four indicator species found in the Hamilton region identified in 2011 indicates high quality marsh habitat. Species richness remained high in 2012 and 2013.
- American toad population has remained stable, and a slight decrease in leopard and green frogs has been observed at the site since 2010.
- C3 calling codes detected indicates a high abundance of leopard frogs, spring peepers, gray tree frogs, and American toads.
- The leopard frog is a declining species in Ontario. Their presence indicates a healthy wetland that must be protected to prevent further population declines.

Overall Status 2013:
Healthy amphibian community